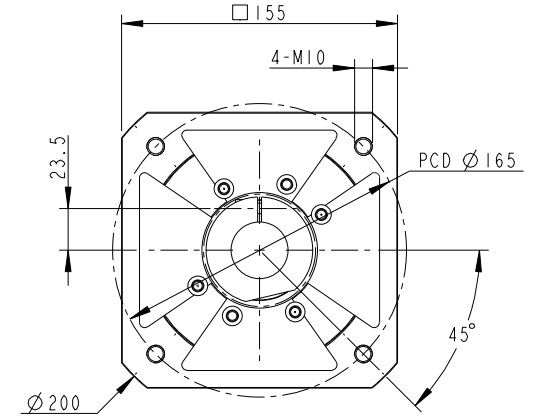
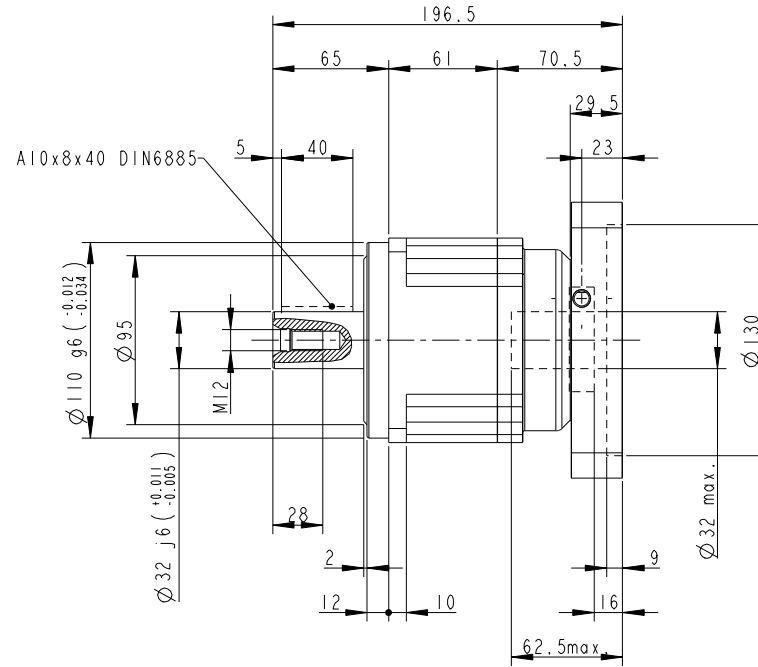
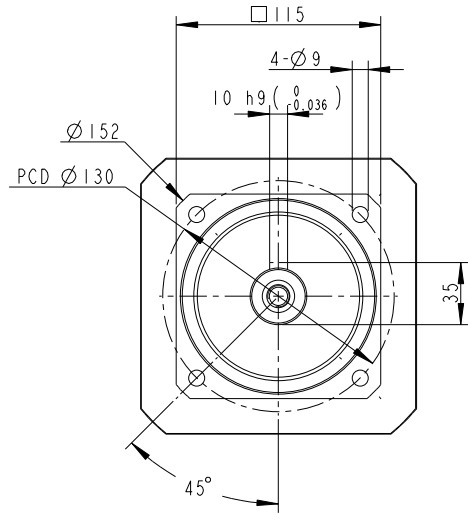


AB115 - 004 - S2 - P0 / SIEMENS 1FK7080-2AF71




INERTIA: 2.57~3.25kg·cm²
 MASS: 7.8kg

SHAFT OPTION S1: SMOOTH OUTPUT SHAFT(STANDARD)
 SHAFT OPTION S2: OUTPUT SHAFT WITH KEYWAY
 MICRO BACKLASH<= 1 arcmin
 REDUCED BACKLASH<= 3 arcmin
 STANDARD BACKLASH<= 5 arcmin

BUSHING SUPPLIED WHEN MOTOR SHAFT DIAMETER SMALL THAN $\varnothing 32$

Old Part No. AB1151-P4140604

PART NO. AB1151-P0403401901 AB115-1, AD-P110-M155-1		 APEX DYNAMICS, INC.	
APPROVALS	DATE	TITLE AB115 1 STAGE, RATIO= 3~10 AND MOTOR FLANGE MOUNTING	
DRAWN 江淑惠		DWG NO. AB1151-P0403401901	
CHECKED		SIZE A0	SCALE 1:1
APPROVED		REV 2.0	