

伺服电机规格书

SPECIFICATION

S

电机型号: 80BM-02430A5-C
MODEL:

版本号: INN

基本参数/BASIC PARAMETERS

额定功率(Kw): Rated Output(Kw):	0.75	极数: Number of Poles:	10
额定电压(V): Rated Voltage(V):	DC24	耐热等级: Vibration Class :	F
额定转速(rpm): Rated Speed(rpm):	3000	最高转速(rpm): Max. Speed(rpm):	3100
额定电流(Arms): Rated Current(Arms):	38.8±10%	瞬时最大电流(Arms): Instantaneous Max. Current(Arms):	77.6±10%
额定扭矩(N.m): Rated Torque(N.m):	2.4	瞬时最大扭矩(N.m): Instantaneous Peak Torque(N.m):	4.8
线电阻(Ω): Line Resistance(Ω):	0.0138±10%(25℃)	线电感(mH): Line Inductance(mH):	0.12±10%
线反电势(V/krpm): Line Back EMF.(V/krpm):	3.7±10%	力矩系数(N.m/A): Torque Coefficient(N.m/A):	0.06±10%
转子惯量(Kg.m ² ×10 ⁻⁴): Rotor Moment of Inertia(Kg.m ² ×10 ⁻⁴):	1.7±10%	反馈元件: Feedback Component:	磁电增量式/Incremental Encoder, 2500PPR
保持制动器扭矩 (N.m) : Static Torque (N.m) :	-	保持制动器工作电压 (V) : Rated Voltage(V):	-
绝缘电阻(MΩ): Insulation Resistance(MΩ):	DC500V, >20MΩ	噪音(dB): Noise(dB):	≤60dB, 无异响/None Special Noise
工作时间: Time rating :	连续 Continuous	振动等级: Vibration Class :	V 15
环境温度: /Ambient Temperature :	-20~+40℃	环境湿度: Ambient Humidity :	20~80%不结露 20~80% No Condensation
励磁方式: Excitation:	永磁式 Permanent Magnet	安装方式: Mounting :	法兰式 Flange Method
连接方式: Drive Method :	直接连接 Direct Drive	电机重量(Kg): Weight(Kg):	2.3
保护方式: Enclosure :	全封闭, 自冷IP65(轴贯通部分除外) Totally Enclosed, Self-cooled, IP65(except for shaft opening).		
旋转方向: Rotation Direction :	正转指令从负载侧看为逆时针方向旋转 Counterclockwise(CCW)		

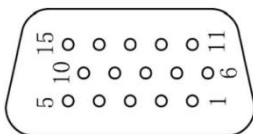
※额定转矩表示安装在200×200×6的铝制散热板上且在环境温度40℃时的连续容许转矩值。/Rated torque is the continuous allowable torque at 40℃ with an Al heatsink of200×200×6.

连接器/CONNECTORS

动力插座/Power Line Socket

插座编号 Socket Numbers	黄 绿	红	蓝	黑
信号引线 Signal leads	PE	U	V	W

编码器插座/Encoder Socket

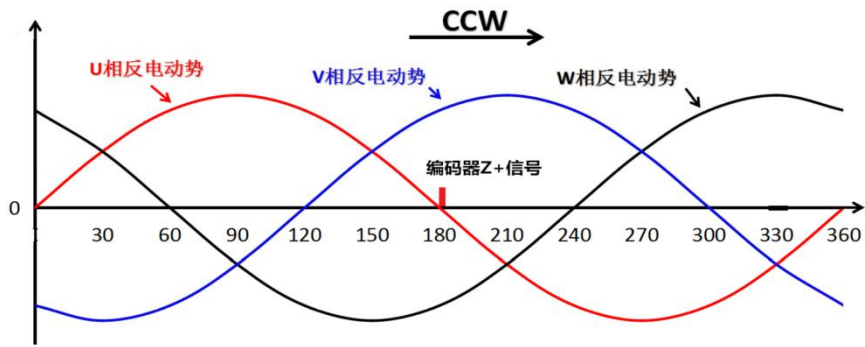


DB15 PIN 公头

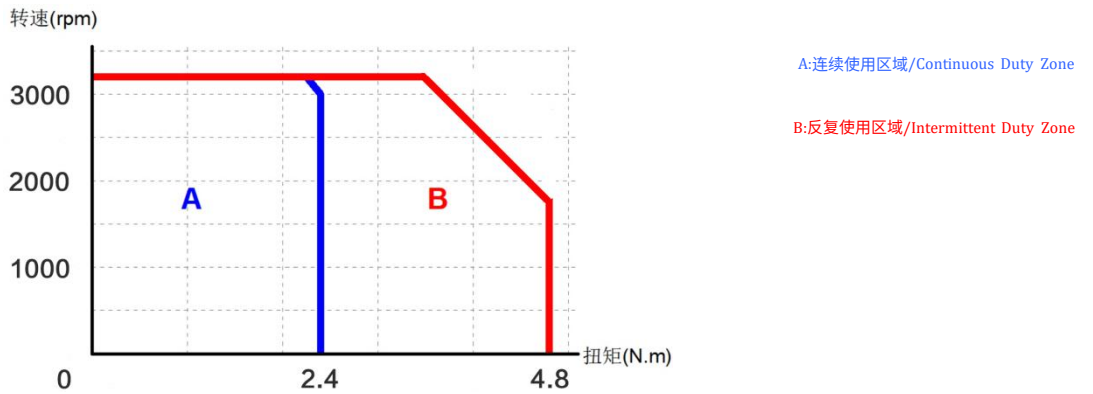
插座编号 Socket Numbers	1	2	3	4	5	6	7	8	9	10	11	12	13	14	15
信号引线 Signal leads			U+	5V	0V	V+	Z-	Z+	W+		B-	B+	A-	A+	

伺服电机规格书 SPECIFICATION

编码器零点与电机相位关系

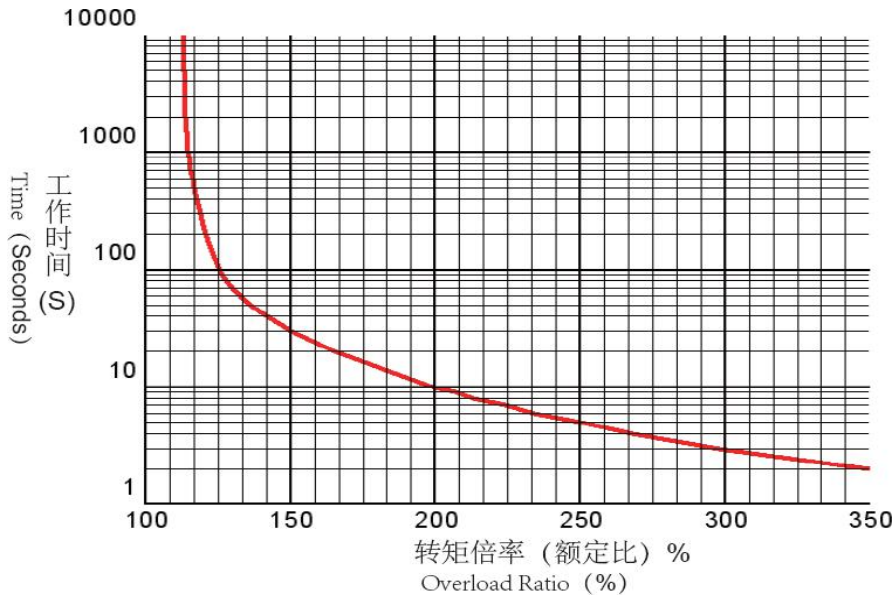


转矩—转速特性/TORQUE-SPEED CHARACTERISTICS



过载特性曲线/OVERLOAD CHARACTERISTICS

工作时间在电机环境温度40℃以及热起动的条件下设定/The characteristics is measured in the warm-boot conditions at 40℃;

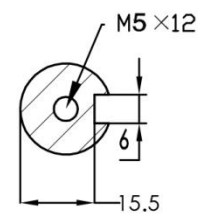
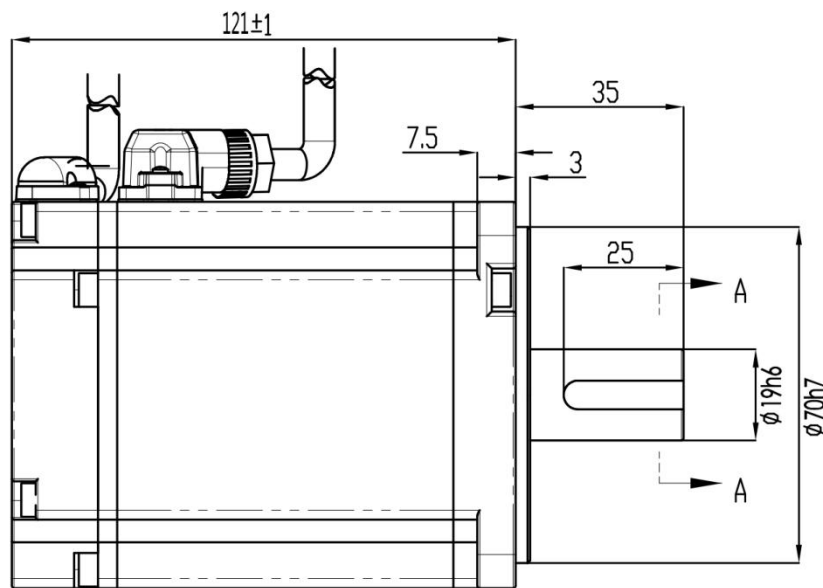
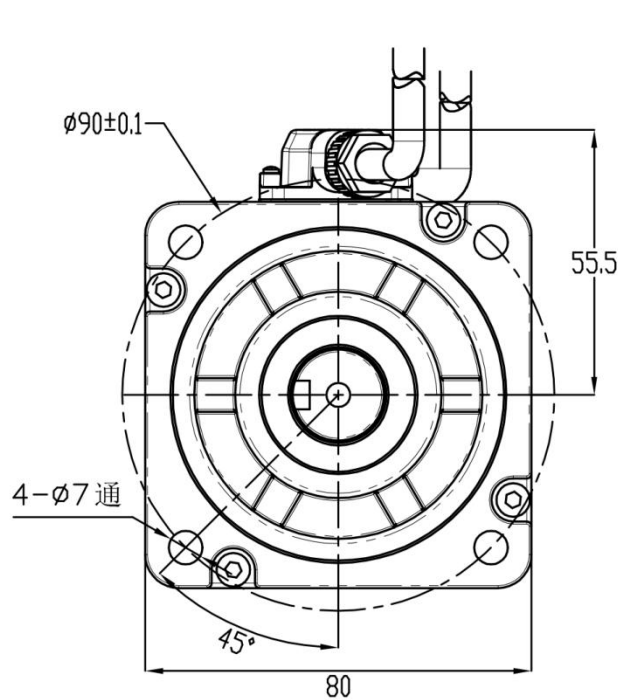


※1:上述过载特性并不保证100%以上输出的连续使用/The above characteristics do not supply 100% output for continuous running;

※2:使用时, 请确保有效转矩在“转矩-转速特性”的连续使用范围内/Please make sure that the effective torque is in the range of T-N characteristics' continuous duty zone.

※3:由于产品改良或规格变更, 我们会适时对规格书进行更新, 请关注相关信息, 恕不另行通知。/Specification are subject to change without notice for ongoing product modification and improvement, please pay more attentions to the related information.

电机外形参考图形



设计 变更	4		视图		设计:	日期:	名 称: 高性能稀土永磁伺服电机	订货号:
	3				校对:	日期:		
	2		ERP:		型 号:			
	1							